

BELLE TONACAO

Interior Designer

While enjoying my job as a waitress and studying at Swinburne University of technology. My passion for design started in high school, undertaking environmental design. During my studies, I established a liking towards making 3D models and find it therapeutic though at the same time it comes with great patience. In my spare time, I like to watch Architectural Digest in Youtube. There are many designs periods I like but in particular I appreciate the Modern Mid-Century design period. I like simple yet sophisticated designs and that's how I would also describe myself. Having grown up in the Philippines, poverty was something I saw almost every day, so the fact that I get the opportunity to do a project that circles around homelessness means so much to me.

For the 'Second Chance - Social Cohesion' project. I was given a brief to design a social enterprise section that will be funding for the Social service section for the homeless. My design idea is to follow along with the theme 'Social Cohesion' as for my design there will be central points in each space for social connectivity to happen. When researching about 'Social cohesion'; I found that it statistically proves the positive impact on social behaviour. With this I have questioned what is the best choice for spatial planning, choice of materials and colours. As a sociable person myself, I envision people to feel free and comfortable in any given environment. I am so excited by the potential of the Second Chance Project and I'm grateful for the opportunity to make a difference through the implementation of functional and relevant design.

Upon completing the Advanced Diploma, I plan to continue my studies in Architecture and also gain part-time employment within the industry to further my skills in a hands-on setting. For the future achievements, is to work in a studio focusing on Modern Mid-Century design style, I would also hope for becoming an architect in the future. Though, I still have a lot of goals to reach at a young age and but I wish to travel and experience the design world in a much more bigger and challenging aspect.

A Second Chance Project Social Cohesion



DESIGNER



WEBSITE



SOCIAL MEDIA



SOCIAL ENTERPRISE

Design Repsonse

For the Second Chance Project, my brief for Part A, Section One includes an Accommodation for overnight stayers, a Cafe, and Market, following a large space to transition into the emergency service area. For the Social Enterprise section, this space provides the funding for the social service area.

My design follows the concept of 'Path To Connection' focusing on the 'Social Cohesion' aspect to the project. The design allows for 'Social Cohesion' to flow within the spaces incapulating open areas for a communion and intimate moments. This enables for a positive affect on social behaviour and on mental health.

The materials I have selected are drawn to a neutral palette, with environmental colours and textures.

The spatial layout is designed with logical thinking. With purposeful design process, as well as it has an angular site structure, there will be organic components all through the spaces, projected by the forms and lines communicated in each three spaces.



A Second Chance Project Social Cohesion



DESIGNER

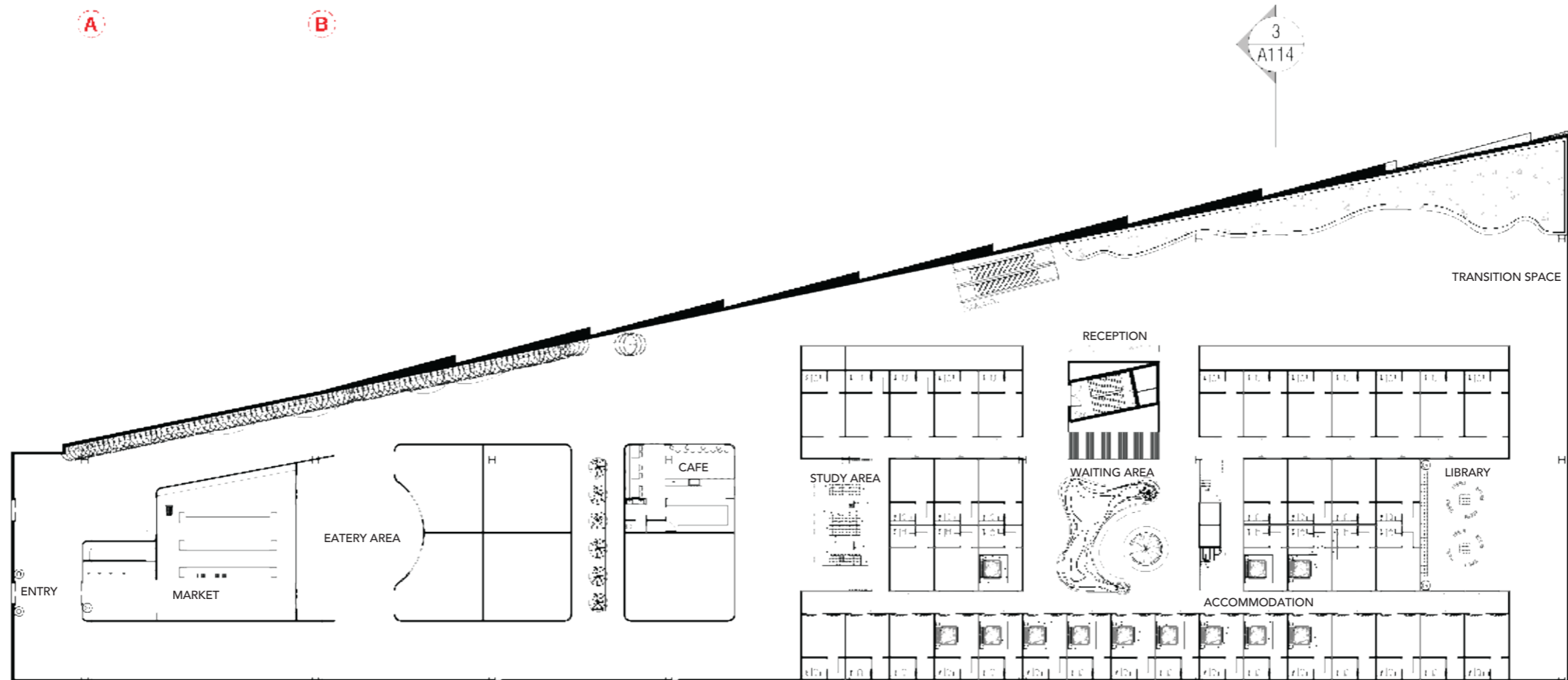


WEBSITE

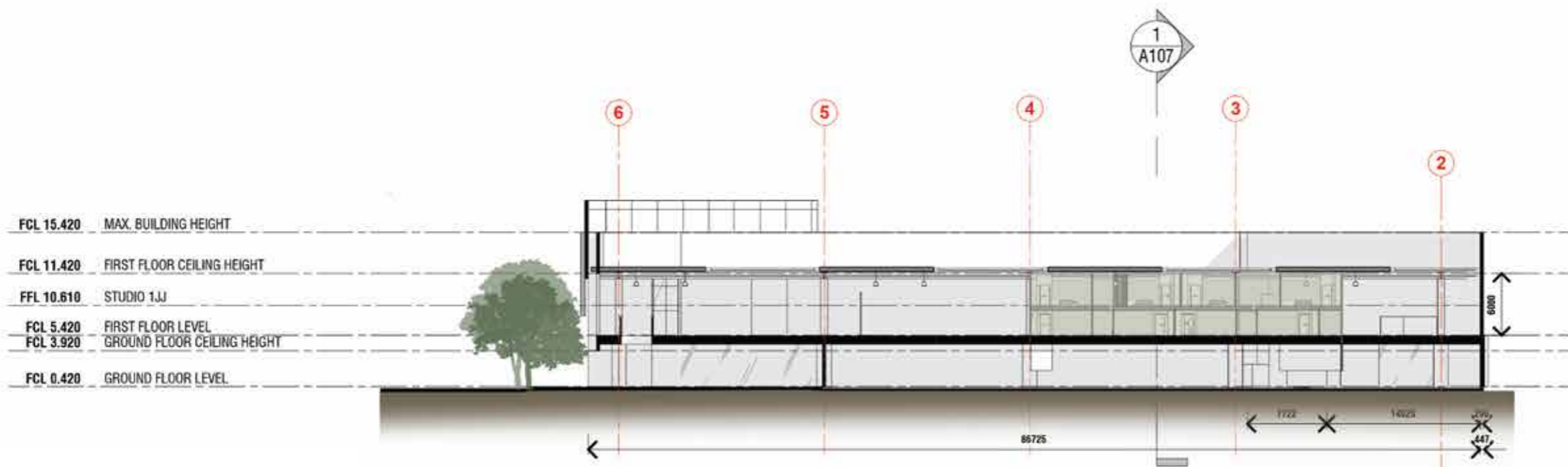


SOCIAL MEDIA

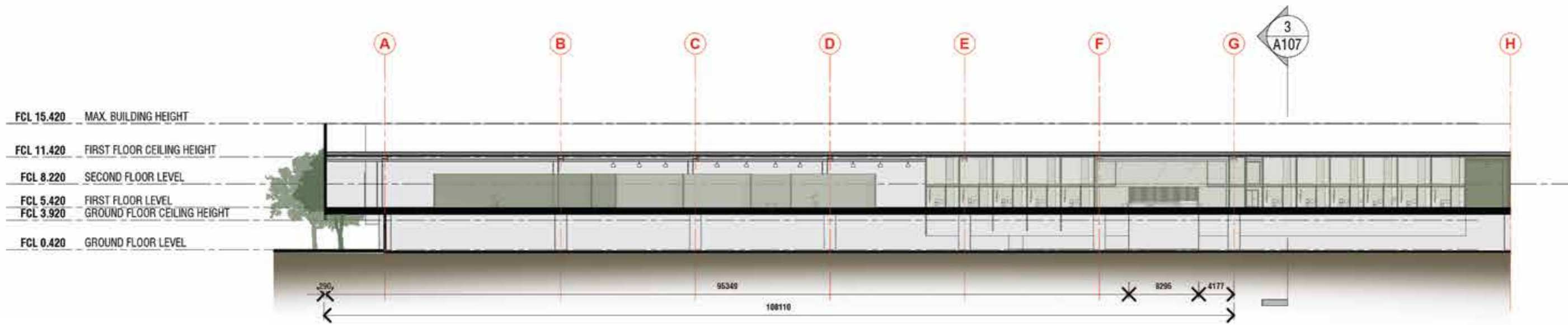




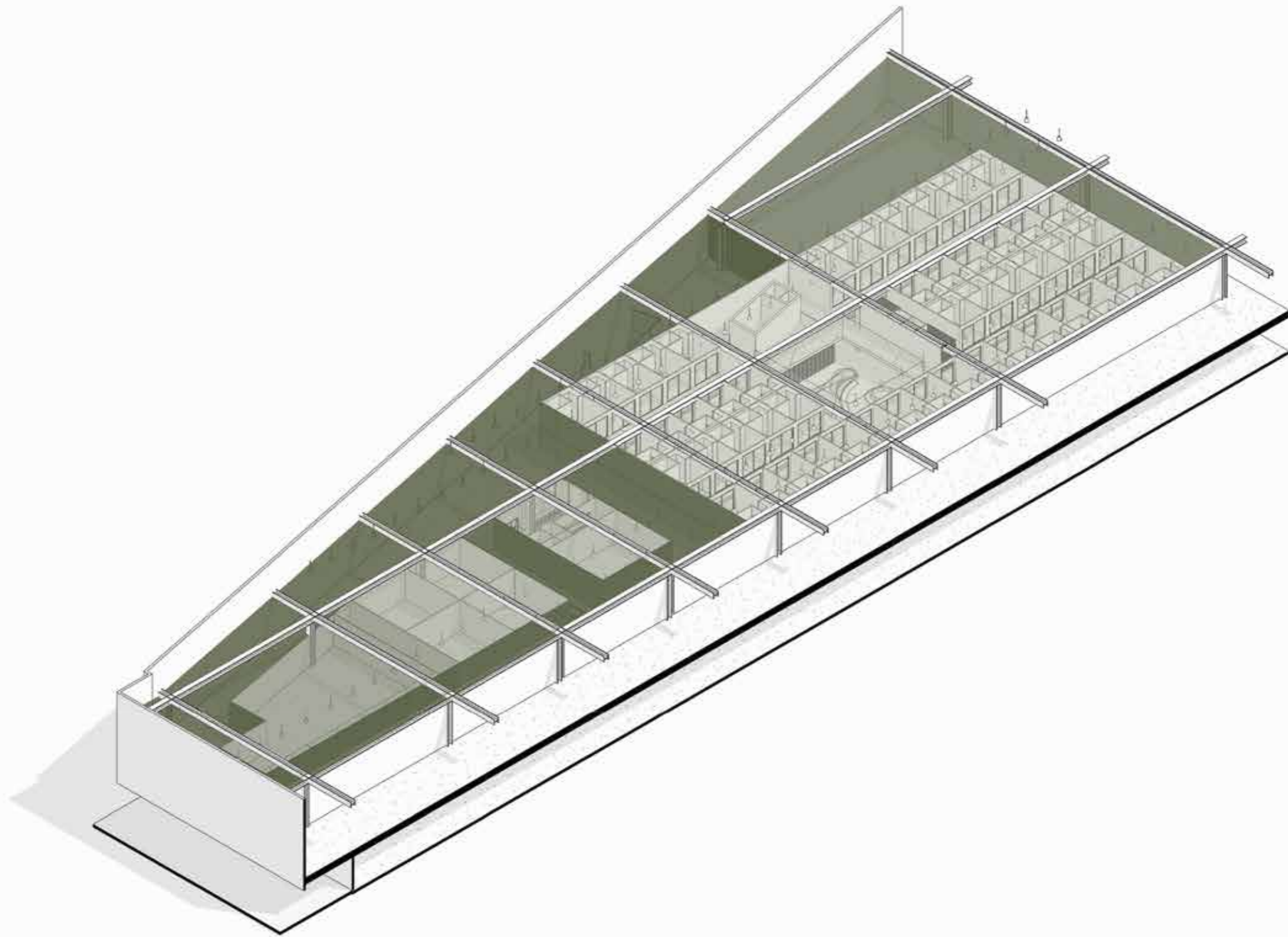
1 PROPOSED FLOOR PLAN
SCALE 1 : 500



1 PROPOSED SHORT SECTION
SCALE 1 : 500



2 PROPOSED LONG SECTION
SCALE 1 : 500



PROPOSED AXONOMETRIC