



ALEXANDRA WILLIAMSON

Interior Designer

Hi, I'm Alexandra Williamson, I come from a family of creatives, my grandmother is a dressmaker, my father is an art teacher at the prestigious Camberwell Grammar School. I have developed a love for all things art and design since I was a little girl, painting and drawing in my free time. My Brother and I have enrolled in design courses since leaving Secondary School, with my brother studying Architecture at RMIT.

I started at Swinburne at the start of 2021, with Covid still looming, classes were held Online. Despite not being on campus, lots of connections and friendships were made and I have found such a beautiful group of girls that support each other and are always there when you need help, especially when it comes to Revit.

I have really enjoyed my studies at Swinburne over the past two years. I have enjoyed developing my CAD skills on Revit, Adobe Illustrator and Photoshop. During the course of the second chance project, I have really enjoyed getting to know the space, with site visits and Brendan Nottle coming in to talk to us about the importance of the space and how it should be used.

After my studies at Swinburne, I hope to work in the industry, with a company I love and admire, maybe one day working for myself, designing and decorating. My dream is to one day make someone's forever home. That feeling will be forever rewarding.

A Second Chance Project Social Cohesion



DESIGNER



WEBSITE



SOCIAL MEDIA



SOCIAL ENTERPRISE

Design Repsonse

When creating the commercial spaces I wanted to create spaces that were unique and diverse, whilst incorporating warm and soft materials. I managed to achieve this by structural wall placements and creating transition spaces, from each space with another without tarnishing the existing scale.

I mostly enjoyed getting creative, by downloading and creating components such as clothing racks and decorations for my op shop to really paint a picture of how the space will flow and be decorated.

The spaces I have created are the opportunity shop and a cinema. The aim of the social enterprises was to fund the social services, and create free emergency accommodation for the homeless.

The cinema consists of 3, large 10x10 spaces, each cinema has the capacity of 75 seats and a large drop down canvas style screen. My second space, the opportunity shop hold many unique trinkets, from books. Coffee machines to second hand clothing.



A Second Chance Project Social Cohesion



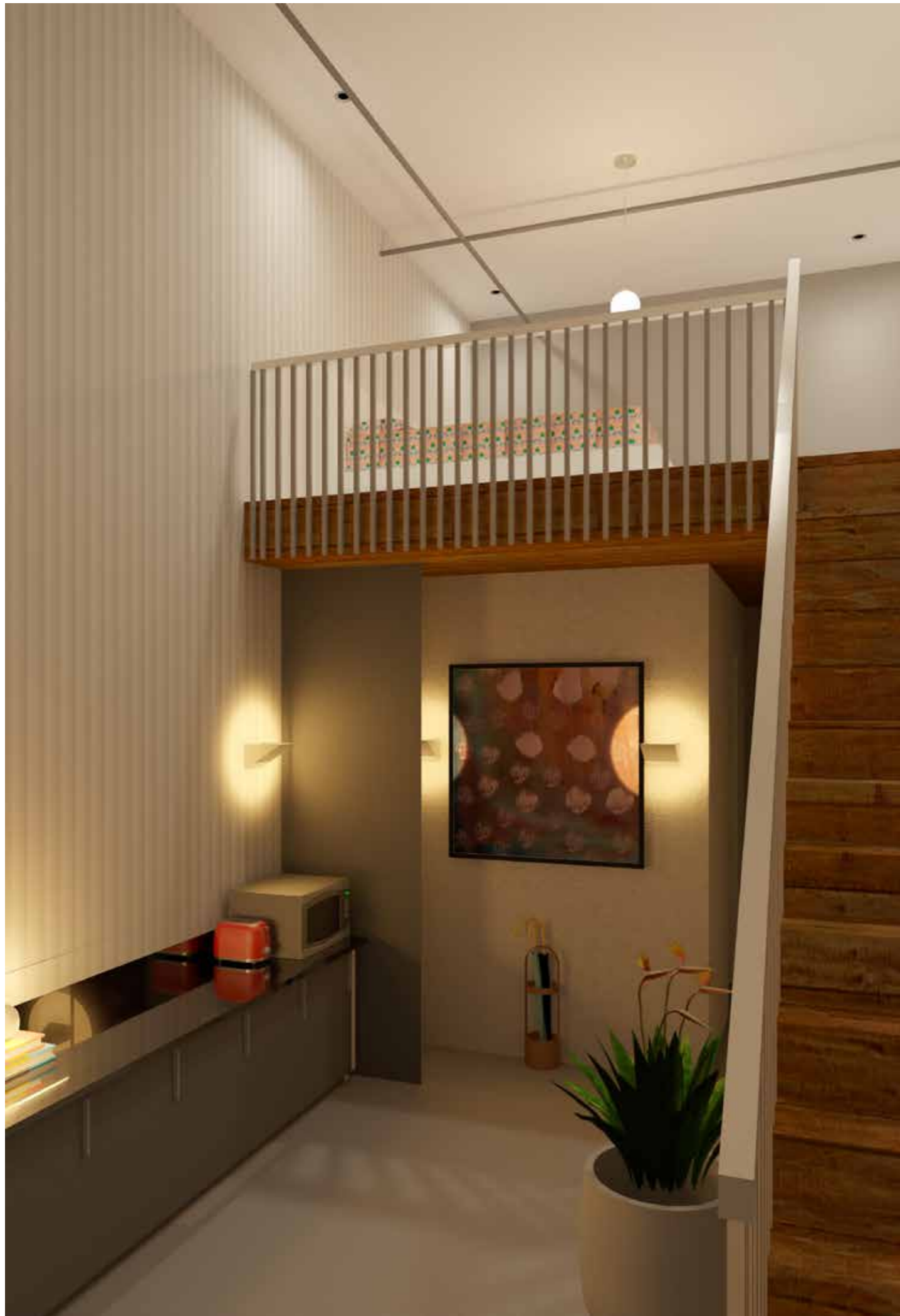
DESIGNER



WEBSITE

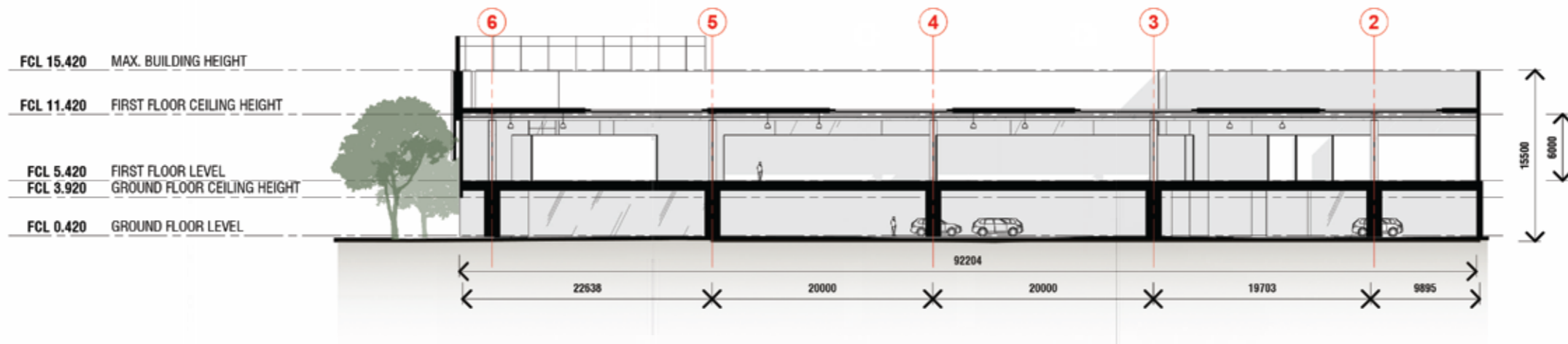


SOCIAL MEDIA

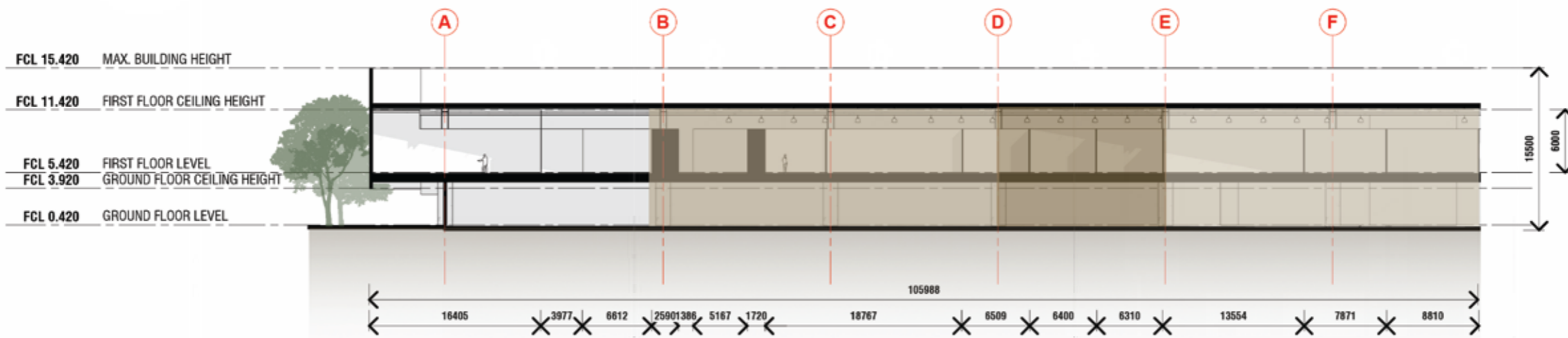




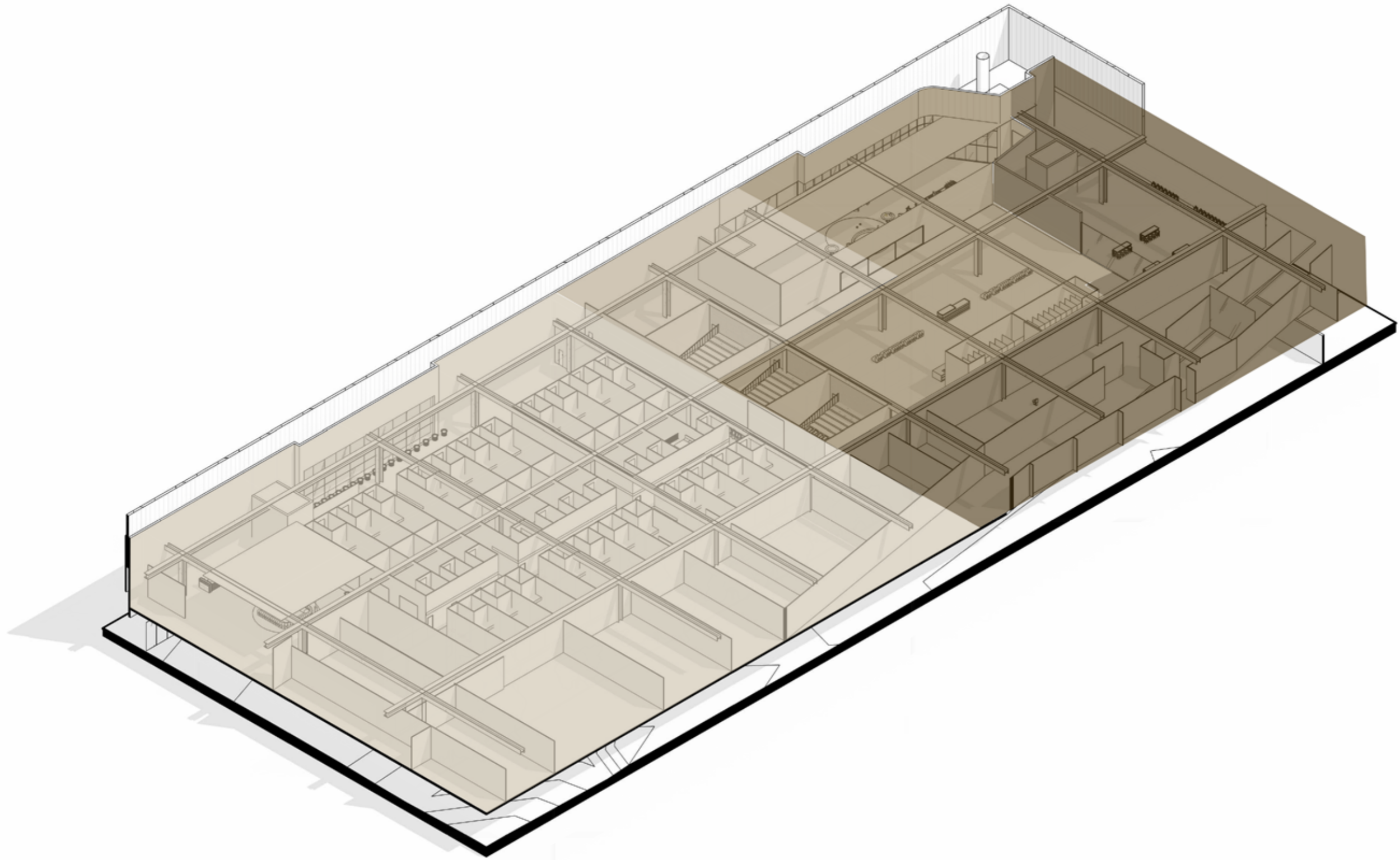
1 PROPOSED FLOOR PLAN
SCALE 1 : 500



2 PROPOSED CROSS SECTION
SCALE 1 : 500



1 PROPOSED LONG SECTION
SCALE 1 : 500



PROPOSED AXONOMETRIC